

Guidance Corner

VOLUME 16, ISSUE 3

FEBRUARY 2016

McGuffey High School, Claysville PA

SCHOLARSHIP OPPORTUNITIES

WHO: Who qualifies for this scholarship/award?

WHAT: What is the value of this scholarship/award?

WHERE: Where can I find an application/information?

WHEN: When is the deadline?

Scholarship information is based on materials received by McGuffey High School. Please refer to the "WHERE" sections to see where to find an application. "Guidance Office" will be listed only if a paper application is available. If a website is listed, please visit that site for information on how to apply. Scholarship information will be updated as necessary. This newsletter can also be found in the Guidance section of the McGuffey High School website.

PENNSYLVANIA ASSOCIATION OF COMMUNITY BANKERS (PACB)

WHO: Dependent child of a parent working at least 1,000 hours per year, for a minimum of two years, for a regular member of the PACB. Applicant must enroll as a full time student in a college, university, or community college.

WHAT: \$1,000, renewable

WHERE: Guidance office

WHEN: February 12, 2016

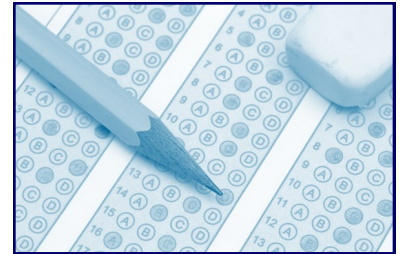
MEA PENNIE KENNEDY MEMORIAL SCHOLARSHIP

WHO: The McGuffey Education Association (the teachers' union) offers this scholarship annually to a deserving senior who will be attending a post-secondary institution and earning a degree/title/certification upon completion. Applicant must have a minimum 2.5 cumulative GPA. Essay is required.

WHAT: Amount varies according to monies in the fund.

WHERE: Guidance office

WHEN: April 1, 2016



Test Dates

SAT: www.collegeboard.org

October 3, 2015

-register by Sep 3

November 7, 2015

-register by Oct 9

December 5, 2015

-register by Nov 5

January 23, 2016

-register by Dec 28

This begins the redesigned SAT exam:

March 5, 2016

-register by Feb 5

May 7, 2016

-register by Apr 8

June 4, 2016

-register by May 5

ACT: www.actstudent.org

September 12, 2015

-register by Aug 7

October 24, 2015

-register by Sept 18

December 12, 2015

-register by Nov 6

February 6, 2016

-register by Jan 8

April 9, 2016

-register by Mar 4

June 11, 2016

-register by May 6

McGuffey High School Code:

390700

WASHINGTON COUNTY COMMUNITY FOUNDATION POST-SECONDARY SCHOLARSHIPS

The Washington County Community Foundation (WCCF) hosts more than 30 post-secondary scholarship funds to help local students pursue higher education. McGuffey students are eligible for the scholarships listed below. All applications must be submitted electronically. **For students applying to more than one WCCF scholarship, only one transcript and one FAFSA is necessary.**

WHO: Please check the WCCF website for specific eligibility requirements for each scholarship.

- Alice Boone Main Memorial Fund
- Buckholt Science Scholarship
- CAS/Dr. Stacher Scholarship Fund
- Chapman Family Scholarship
- CHROME Federal Credit Union's Ed Orisko Scholarship
- Clyde J. Tracanna/Washington Rotary Club Fund
- Curtis Wachter Scholarship Fund
- David O. and Sara F. Johnson Family Education Fund
- Hunter Lafe McAdoo Scholarship Fund
- John & Sophie Choratch Scholarship Fund
- Kerns Family Scholarship Fund
- Olivia Scott Scholarship Fund
- Ryan Johnston and Vaughn Johnston Scholarship Fund
- Sam & Bev Minor Fund
- William L. and Barbara M. Laird Fund

WHAT: Scholarship amounts vary.

WHERE: www.wccf.net Click on the For Scholarships tab.

WHEN: April 1, 2016

THE AMATEUR ASTONOMERS ASSOCIATION OF PITTSBURGH

WHO: Graduating seniors who are enrolling in a four year college or university to study **astronomy, physics, or mathematics.** Applicants must have a minimum 3.25 cumulative GPA, and have scored a minimum 27 composite on the ACT or a minimum 600 in Math and 600 in critical reading on the SAT.

WHAT: \$1,000

WHERE: www.3AP.org

WHEN: April 1, 2016

WASHINGTON AREA FEDERAL CREDIT UNION SCHOLARSHIP

WHO: Graduating seniors who plan to pursue post-secondary education in Fall 2016. Applicant must have a minimum 2.5 cumulative GPA. Scholarships will be awarded to students who display academic achievement, exemplary character and leadership, and who provide service to the community. Essay is required.

WHAT: Three scholarships of \$1,000 each will be awarded.

WHERE: Guidance office

WHEN: March 15, 2016

WASHINGTON LIONS CLUB

WHO: Graduating McGuffey seniors who have been accepted to a college or university. Scholarship will be considered solely on the basis of scholastic achievement, extra curricular activities, and a narrative statement of goals and achievements.

WHAT: \$1,000

WHERE: Guidance office

WHEN: April 9, 2016

DELTA KAPPA GAMMA SOCIETY

WHO: Graduating female who is planning to pursue a career in **education**.

WHAT: \$500

WHERE: Guidance office

WHEN: February 19, 2016

RALPH B. CANTERBURY SCHOLARSHIP

WHO: Graduating senior who is a primary account holder/member of the Clearview Federal Credit Union. Applicant must be applying to an accredited college, university, or educational institution during Fall 2016.

WHAT: Ten (10) scholarships will be awarded in the amount of \$1,000 each.

WHERE: www.clearview.org Click on the News and Security tab.

WHEN: March 31, 2016

BUICK ACHIEVERS SCHOLARSHIP PROGRAM

WHO: Graduating seniors who plan to enroll at a four-year college or university with a major in engineering, technology, or design, with an interest in the automotive industry.

WHAT: Fifty (50) scholarships each up to \$25,000/year

WHERE: www.buickachievers.com

WHEN: February 29, 2016

NATIONAL FEDERATION OF THE BLIND

WHO: Any blind or visually impaired student who will be attending a post-secondary school in 2016-2017.

WHAT: Thirty national scholarships ranging from \$3,000 to \$12,000. Two state scholarships, each in the amount of \$1,000.

WHERE: To apply for the national scholarship: www.nfb.org/scholarships To apply for the Pennsylvania (state) scholarship: www.nfbp.org/scholarships

WHEN: March 31, 2016

ASPIRING FASHION PROFESSIONAL

WHO: Graduating seniors who are interested in pursuing a fashion degree at an accredited post-secondary school or college.

WHAT: \$1,000

WHERE: www.fashion-schools.org Click on the purple scholarship square located at the bottom of the page.

WHEN: June 1, 2016

ASPIRING ANIMATION PROFESSIONAL

WHO: Graduating seniors who are interested in pursuing an animation career path at an accredited post-secondary school or college.

WHAT: \$1,000

WHERE: www.animationcareerreview.com The scholarship information will be on the right hand side of the page.

WHEN: June 1, 2016

ITALIAN-AMERICAN SCHOLARSHIPS

WHO: Graduating seniors who are of Italian decent. Preference will be given to students whose parents are both of Italian decent. At least one parent should be of full Italian decent. Applicant must have a minimum 3.5 cumulative GPA, demonstrate a challenging curriculum, show evidence of leadership in co-curricular activities, and have strong recommendations.

WHAT: Eight (8) or more one-year scholarships, each for \$3,000

WHERE: Guidance office

WHEN: March 6, 2016

ASPIRING NURSE SCHOLARSHIP

WHO: Graduating seniors who plan to pursue a college education in nursing, including LPN/LVN, ADN, and BSN programs. Applicants should have a track record of academic excellence, particularly in science and mathematics, and should also have a passion for the nursing profession and the overall field of healthcare.

WHAT: \$1,000

WHERE: www.nursingschoolsalmanac.com Click on the banner on the right hand side of the page.

WHEN: June 30, 2016

ARTHUR S. REESE FAMILY TRUST

WHO: Graduating senior (and not a member of the Fairhill Manor Christian Church) who displays scholastic achievement, motivation for continuing education, and who possesses the qualities and traits of leadership, citizenship, and service to school and community.

WHAT: \$500

WHERE: Guidance office

WHEN: May 1, 2016

THE OHIO STATE UNIVERSITY

WHO: Graduating senior who has been accepted to The Ohio State University.

WHAT: Two (2) \$2,000 scholarships will be awarded by the Ohio State Alumni Club of Pittsburgh

WHERE: <http://pittsburghbuckeyes.alumni.osu.edu/>

WHEN: February 5, 2016

BIG 33 SCHOLARSHIP FOUNDATION

WHO: Current Pennsylvania and Maryland high school seniors who have earned a minimum 2.0 cumulative GPA for the previous two academic years (grades 10 and 11) planning to continue their education beyond high school in an accredited institution of higher education or technical school.

WHAT: Numerous \$1,000 awards will be granted.

WHERE: www.big33.org Click on the scholarship tab.

WHEN: March 4, 2016

ROSS F. DIMARCO SCHOLARSHIP

WHO: Graduating seniors from Fayette, Greene, Somerset, and Washington Counties who exemplify the characteristics espoused by the **Lions Club International**. Applicants must create and foster a spirit of understanding among peoples of the world, promote the principles of good government and good citizenship, take an active interest in the community, and serve their community without personal financial reward. Preference will be given to applicants who are members in good standing of a Leo Club.

WHAT: Four (4) \$1,000 scholarships, one for each county

WHERE: Guidance Office

WHEN: March 1, 2016

HERMINE SOLT STUDENT SCHOLARSHIP

WHO: Graduating senior who is pursuing higher education in a business related field such as secretarial, office technology, accounting, business education, etc.

WHAT: \$500

WHERE: www.paeop.com –under Award & Scholarships

WHEN: March 1, 2016

CALIFORNIA UNIVERSITY ADMISSIONS SCHOLARSHIP

WHO: Graduating seniors, with a minimum 3.0 cumulative GPA and average or above average SAT scores, who will be attending Cal U.

WHAT: Cal U will be awarding over \$2 million in scholarships. Awards are renewable for up to four years.

WHERE: www.calu.edu/admissions-scholarships

WHEN: Now! Applications are available until scholarship funds are depleted.

LUCY A. VALERO MEMORIAL SCHOLARSHIP

WHO: As part of the PSEA (Pennsylvania State Education Association) Trust, this scholarship is awarded to outstanding seniors who plan to enroll in an accredited teacher preparation program in Pennsylvania. Applicants must also be in good standing with their high school community and show a high degree of academic proficiency as evidenced by grades and transcripts.

WHAT: The number of and amount of each award shall be determined by the board of directors.

WHERE: www.psea.org/students -left hand side of page under Valero Scholarship

WHEN: February 28, 2016

JOHN J. AND MARTHA A. HUCKO SCHOLARSHIP FUND

WHO: Graduating senior residing in Allegheny, Washington, or Westmoreland County, who has a minimum 3.25 cumulative GPA, has been accepted to Duquesne University, and can demonstrate financial need. Essay is required.

WHAT: \$3,000, which can be renewed for three additional years if requirements are met.

WHERE: Guidance Office.

WHEN: March 31, 2016

PENNSYLVANIA STATE EMPLOYEES CREDIT UNION (PSECU)

WHO: Graduating senior who is a member of the PSECU (or joins by December 31) and plans to attend a two or four-year college or university.

WHAT: PSECU will offer six scholarships, each up to \$8,000. Each recipient receives up to \$2,000 per year for up to four years, providing scholarship requirements are met.

WHERE: For an application or membership eligibility, visit www.psecu.com/scholarships

WHEN: February 29, 2016

GOOD ORTHODONTICS SMILE SCHOLARSHIP

WHO: Graduating seniors who are PAST or CURRENT patients of Drs. Bob or Ron Good. The winner of the scholarship will be determined by the content of an essay describing, “How My GOOD Smile Has Influenced My Life.”

WHAT: \$500

WHERE: Guidance Office

WHEN: Essays are to be submitted directly to one of the Good offices by February 1, 2016.

AXA ACHIEVEMENT COMMUNITY AWARD

WHO: High school senior who plans to enroll full-time in an accredited two-year or four-year college or university in the United States for the entire 2016-2017 academic year. Applicant must demonstrate ambition and self-drive as evidenced by outstanding achievement in school, community, or work-related activities.

WHAT: Every AXA Advisors branch office nationwide distributes up to twelve \$2,500 awards in their local area.

WHERE: www.axa-achievement.com

WHEN: The application deadline is February 1, 2016, but only the first 10,000 applications will be accepted. We encourage you to apply early.

GIANT OAKS GARDEN CLUB SCHOLARSHIP*

WHO: Graduating senior who plans to study gardening and/or its related fields such as: agronomy, biology, botany, city planning conservation, environmental control, environmental science, floriculture, forestry, land architecture, land management, or plant pathology.

WHAT: \$1,000

WHERE: Guidance office

WHEN: April 1, 2016

* Other scholarships are available at www.pagardenclubs.org under the Forms tab. Look for the GCFFP Scholarship Application tab. Various deadlines apply.

OWEM M. KATZ

WHO: Outstanding high school senior who wishes to pursue a career in the metals or materials field and enrolls in a related program (i.e. engineering, metallurgy, materials science).

WHAT: \$1,500

WHERE: Guidance office

WHEN: February 2, 2016

NATHAN P. KENNEDY MEMORIAL SCHOLARSHIP

WHO: Deserving McGuffey High School senior **athlete** who is planning to be a full-time student in a post-secondary program with the intent of obtaining a degree/title/certification.

WHAT: Numerous awards/amounts may be granted.

WHERE: Guidance office

WHEN: April 15, 2016

PENNSYLVANIA AMERICAN LEGION SCHOLARSHIPS

WHO: Graduating seniors who are children/grandchildren of a Pennsylvania Legionnaire.

WHAT: Various scholarships and awards

WHERE: <http://pa-legion.com/programs/student-programs> Click on the scholarships link under Student Programs.

WHEN: May 30, 2016

EPILEPSY FOUNDATION WESTERN/CENTRAL PA SCHOLARSHIP

WHO: Graduating senior with a diagnosis of epilepsy/seizure disorder which must be confirmed by a physician's statement. Applicant must also provide proof of acceptance to a post-secondary academic or vocational program.

WHAT: Eight scholarships totaling \$10,000 will be awarded.

WHERE: Guidance office

WHEN: March 15, 2016

PITTSBURGH TECHNICAL INSTITUTE

WHO: Active members of identified high school clubs and organizations can receive a renewable partial tuition grant. McGuffey students who are active members of the **FFA** are eligible to apply.

WHAT: Up to \$6,000 per calendar year

WHERE: For an application, visit www.pti.edu/scholarshipapp

WHEN: February 27, 2016

PITTSBURGH TECHNICAL INSTITUTE (additional scholarships)

WHO: Graduating seniors attending PTI are eligible to apply for the following additional scholarships: “I” Inspire Scholarship, Inspiration Scholarship.

WHAT: Amount varies for each scholarship.

WHERE: www.pti.edu Go to Admissions & Financial Aid then Grants and scholarships

WHEN: Deadlines vary.

SCHOOL SOUP scholarship search website

WHO: Graduating seniors looking for scholarship monies.

WHAT: Create a student profile and let SchoolSoup find you scholarships that match your information.

WHERE: www.schoolsoup.com/scholarship-directory

WHEN: Deadlines vary.

B.DAVIS SCHOLARSHIP

WHO: Graduating seniors who will be attending a post-secondary institution. Applicants will need to write an essay of 1,000 words or less on a topic listed on the website.

WHAT: \$1,000

WHERE: <http://www.studentawardsearch.com/scholarships.htm>

WHEN: May 23, 2016

ABBOTT AND FENNER SCHOLARSHIP

WHO: High school seniors planning to attend a post-secondary institution. Applicant will submit an essay on the topic that appears on the scholarship page of the website listed below.

WHAT: \$1,000

WHERE: www.abbottandfenner.com/scholarships.htm

WHEN: June 10, 2016

NATIONAL CO-OP SCHOLARSHIP PROGRAM

College cooperative education (CO-OP) is a unique academic program combining classroom studies with professional work experience in a field related to your education and career goals. Although individual co-op programs vary, you will most likely begin with an initial period of full-time study, which will then become an integrated program of class time and relevant work experience.

WHO: Graduating seniors interested in a co-op program at one of the 10 institution listed below. Applicants must also apply to the college/university for admission.

Clarkson University, Drexel University, Johnson & Whales University, Merrimack College, Rochester Institute of Technology (RIT), State University of New York Oswego, The University of Toledo, University of Cincinnati, University of Massachusetts Lowell, and Wentworth Institute of Technology.

WHAT: Each institution offers numerous awards in the minimum amount of \$6,000, renewable each year.

WHERE: www.waceinc.org

WHEN: Scholarship deadline is February 15, 2016; however, admission deadlines vary. Please check website.

Culminating Graduation Projects

Presentation date: Monday, February 15, 2016

VISIT THE WWWEB

FOR CAREER, COLLEGE, AND FINANCIAL AID INFORMATION

*NEW 101 Weird Scholarships for 2015.....	weirdscholarships.net
*NEW Scholarship and financial aid info.....	www.college-scholarships.com
Find scholarships, career and salary info.....	www.StudentScholarships.org
Explore the trades: Plumbing, HVAC, Electrical...	www.ExploreTheTrades.org
Explore University profiles/videos.....	www.collegemajors101.com
Find your major, college, career, & scholarships	www.MyMajors.com
Virtual college tours.....	www.ecampustours.com
Register for the SAT/college search.....	www.collegeboard.org
Register for the ACT.....	www.act.org
Scholarships for students with disabilities.....	www.Disability.gov
Find millions of college reviews and rankings.....	www.collegeproowler.com
College information and more.....	www.CollegeView.com
Christian college information.....	www.christianconnector.com
Saving, planning, and paying for college.....	www.salliemae.com/plan-for-college/
Scholarships, Financial Aid.....	www.scholarships.com
Careers, scholarships, student loans, financial aid	www.TuitionFundingSources.com
Military Service.....	www.military.com
National Collegiate Athletic Assn. (NCAA).....	www.ncaa.org
Scholarships, Internships, career planning.....	www.fastweb.com
Best college rankings.....	www.usnews.com/rankings
Job Search, resumes, career resources.....	www.monster.com
Federal Student Aid.....	www.studentaid.ed.gov
Free Application for Federal Student Aid (FAFSA).	www.fafsa.gov
Education planning for students and parents:	www.educationplanner.com
On-line database of scholarships.....	www.schoolsoup.com/scholarship-directory

Scholarship Request Form

- Please indicate the name of the scholarship(s) for which you are requesting information and return this completed form to the Guidance Office.
- All information (guidelines, requirements, application, etc.) will be forwarded to you as soon as possible.

Please list only those scholarships where paper applications are available in the Guidance Office. Refer to the “WHERE” sections of the newsletter. Guidance Office will be listed only if a paper application is available. If a website is listed, the Guidance Office does not have a paper application.

NAME: _____

HOMEROOM: _____

1. _____
2. _____
3. _____
4. _____
5. _____
6. _____
7. _____
8. _____
9. _____
10. _____
11. _____
12. _____